

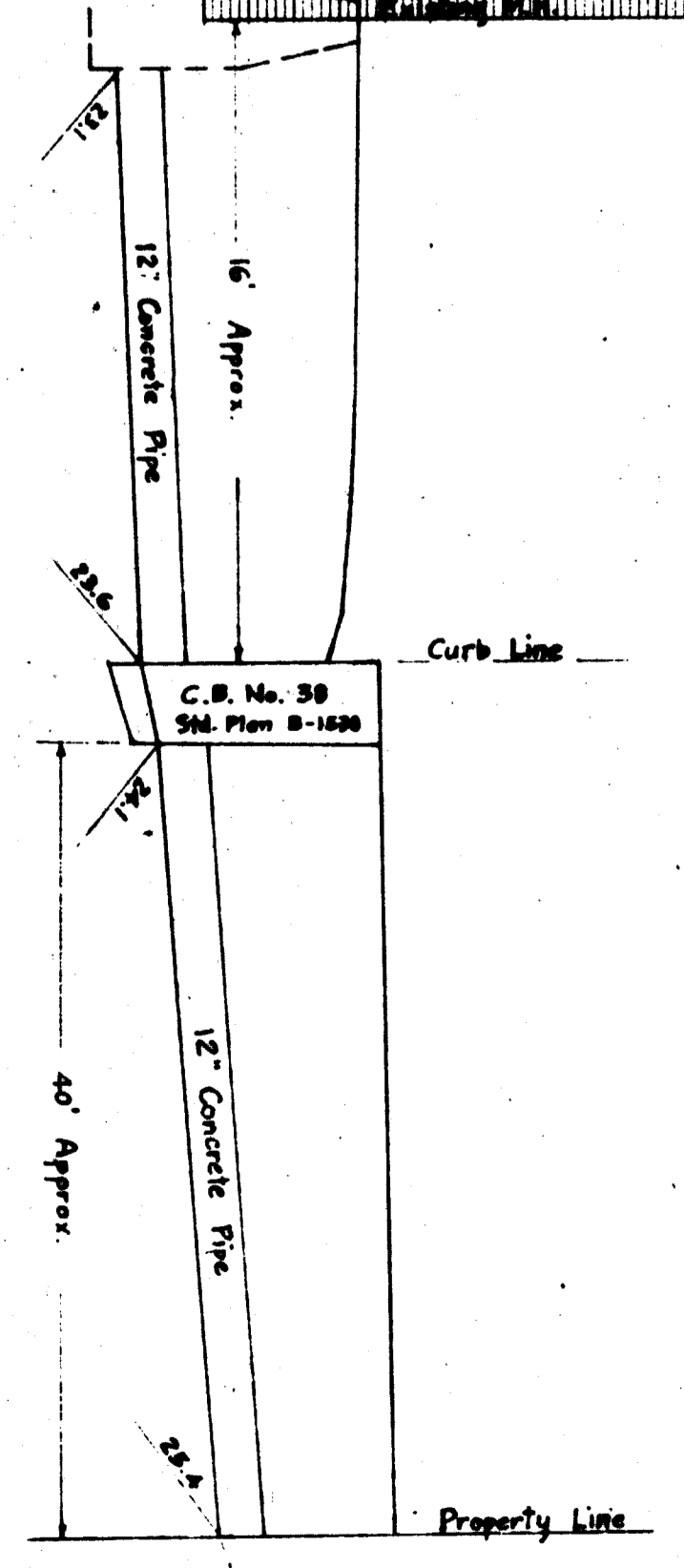
PLAN AND PROFILE
OF
PALOS VERDES STREET
FROM
SANTA CRUZ STREET TO THIRD STREET

CITY OF LOS ANGELES
LLOYD ALDRICH - CITY ENGINEER
PREPARED BY H.A. BARNETT - PRIVATE ENGINEER
35 SOUTH RAYMOND AVE., PASADENA, CALIF.

SCALES
HORIZ. 1"=40'
VERT. 1"=4'
USCS DATUM EFFECTIVE JULY 1, 1925, ORDINANCE NO. 51322, DEPUTY 5715 TO ADJUST TO DATUM PLANE IN USE PRIOR TO SAID DATE.

NOTICE TO CONTRACTORS

All work shown on these plans shall be constructed in accordance with Specifications No. 138 for work included in this improvement see Profiles No. P-8596, P-8598 and Plan DL-1832. All curb and gutter shall be Type C Integral Curbed and Gutter constructed in accordance with Standard Plan D-2462.



STORM DRAIN IN PALOS VERDES ST. BETWEEN EXISTING M.H. AT FIRST ST. AND PROPERTY LINE

| APPROVALS | DATE | SUBMITTED | DATE |
|--------------------------|--------------|--------------------------|--------------|
| APPROVED BY: [Signature] | APR 27, 1941 | APPROVED BY: [Signature] | JUN 30, 1941 |
| APPROVED BY: [Signature] | APR 27, 1941 | APPROVED BY: [Signature] | JUN 30, 1941 |

SECOND STREET AND CENTRE STREET IMPROVEMENT DISTRICT
HARBOR DISTRICT PERMIT NO. B-13
P-8587

HAROLD A. BARNETT
CIVIL ENGINEER
35 SOUTH RAYMOND AVENUE
PASADENA, CALIFORNIA

KATHERINE BASHFORD ELLIOTT
MECHANICAL & ELECTRICAL ENGINEER
124 WEST FOURTH STREET
LOS ANGELES, CALIFORNIA

F. N. ROPP
STRUCTURAL ENGINEER
420 EDITION BUILDING
LOS ANGELES, CALIFORNIA

RANCHO SAN PEDRO HOUSING PROJECT
HOUSING AUTHORITY
OF THE
CITY OF LOS ANGELES

ARCHITECTS COLLABORATING
REGINALD D. JOHNSON
ALLISON G. ALLISON
A. C. ZIMMERMAN
816 WEST FIFTH STREET, LOS ANGELES, CALIFORNIA

APPROVED HOUSING AUTHORITY OF THE CITY OF LOS ANGELES, CALIFORNIA

STREET PROFILES CAL 44
PALOS VERDES ST. 2006